



**Federal Aviation  
Administration**

***55054003  
EN ROUTE  
RADAR ASSOCIATE  
CONTROLLER TRAINING PART C:  
ADVANCED CONCEPTS***

**Lesson 10: Trial Plans**

Version: 1.0 2022.08

***INSTRUCTOR LESSON PLAN***

PAGE INTENTIONALLY LEFT BLANK

# LESSON PLAN DATA SHEET










Course Name	En Route Radar Associate Controller Training Part C: Advanced Concepts
Course Number	55054003
Lesson Title	Trial Plans
Duration	1 hours 45 minutes (includes lesson, practice exercise, and ELT)
Version	1.0 2022.08
Reference(s)	TI 6110.101, En Route Automation Modernization RA-Position User Manual; ERAM ATCHI MISC 230.05, En Route Automation Modernization, Air Traffic Computer-Human Interface; AT URET User Manual Version 3.1a
Prerequisites	NONE
Handout(s)	<ul style="list-style-type: none"> <li>⦿ Part-Task Exercise <i>HO01_L10 (Print prior to class)</i></li> <li>⦿ TI 6110.108, ERAM Quick Reference Controller Card</li> </ul>
Exercise / Activity	Refer to handout for: <ul style="list-style-type: none"> <li>⦿ Part-task exercise: Trial Plans</li> </ul>
Scenario	<ul style="list-style-type: none"> <li>⦿ Run scenario 55054003_L07_S## in TTL</li> </ul>
Assessments	YES - Written ( <i>Refer to ELT01_L10, print prior to class</i> )
Materials and Equipment	<ul style="list-style-type: none"> <li>⦿ Pencil and/or pen</li> <li>⦿ TI 6110.108, En Route Automation Modernization Quick Reference Controller Card</li> </ul>
Other Pertinent Information	<ul style="list-style-type: none"> <li>⦿ <b>Ensure lesson materials are downloaded to the classroom computer</b></li> <li>⦿ This lesson is based on ERAM EAE410</li> <li>⦿ The lesson has been reviewed and reflects current orders and manuals as of April 2022</li> </ul>



*As you prep for this lesson, recall and be prepared to talk about examples and personal experiences that illustrate or explain the teaching points in the lesson.*

# LESSON ICON LEGEND

---

	Description
	The Activity icon indicates an exercise, lab, or hands-on activity.
	The Discussion Question icon signals a discussion question to be asked to the students.
	The Handout icon indicates a handout is to be distributed to the students.
	The Instructor Note icon is in hidden text and indicates text that is for the instructor only.
	The Multimedia icon indicates a video or audio clip is in the presentation.
	The Phraseology icon indicates that phraseology is in the content.
	The WBT icon indicates a component of web-based training.
	The Click icon indicates a PPT slide with click-based functionality to present additional information.
	The Definition icon indicates a published definition.

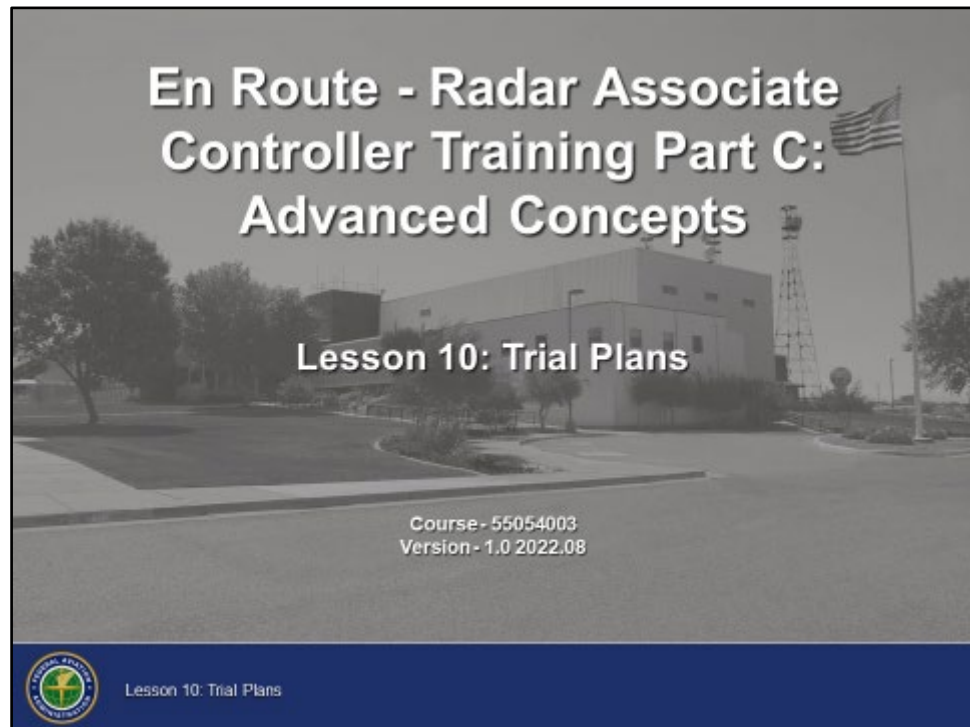
---

PAGE INTENTIONALLY LEFT BLANK

# LESSON INTRODUCTION

---

## Overview



In this lesson, we will discuss the creation of trial plans. A trial plan allows you to test for conflicts and send a flight plan amendment.

---


# LESSON INTRODUCTION (CONT'D)

## Lesson Objectives

### Lesson Objectives

**At the end of this lesson, you will be able to identify steps for:**

- Creating a trial plan
- Resubmitting an invalid trial plan
- Sending an amendment or interim altitude
- Graphic trial planning

 Lesson 10: Trial Plans 1



*Review the lesson objectives.*

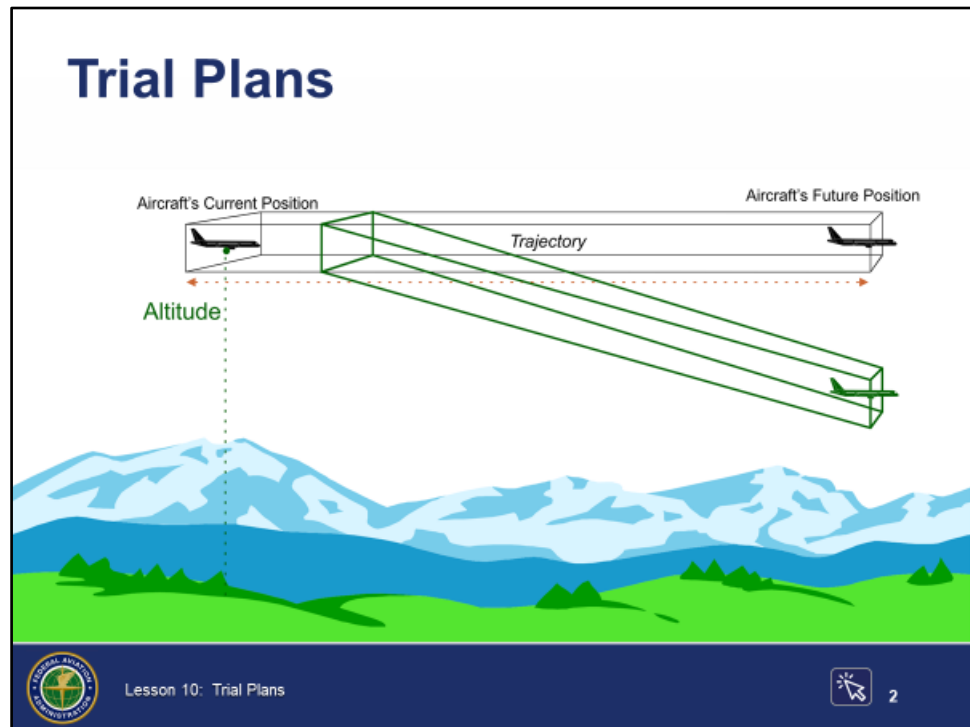
- ☉ At the end of this lesson, you will be able to identify steps for:
  - Creating a trial plan
  - Resubmitting an invalid trial plan
  - Sending an amendment or interim altitude
  - Graphic trial planning

**NOTE:** There will be a graded end-of-lesson test upon completion of the lesson. The passing score is 70%. If you do not achieve a score of 70%, you will be provided study time and one retake of an alternate end-of-lesson test.

# CREATION OF TRIAL PLANS

## Trial Plans

AT URET User  
Manual Version  
5.0, p. xx



*Slide is animated, 1 click. Click where indicated by click icon.*

- Trial planning allows you to evaluate changes to flight plan trajectories



*Click to show altitude trial plan.*

- A trial plan checks a desired flight plan amendment before issuing the clearance to see if the planned amendment will resolve the conflict and/or cause any other conflicts
- Both user requests and conflict resolutions can be trial planned
- Trial plans can easily be converted to a flight plan amendment with the click of a button
- Trial plans can be created for:
  - Altitude
  - Route
  - Speed
  - Restrictions
  - Departures

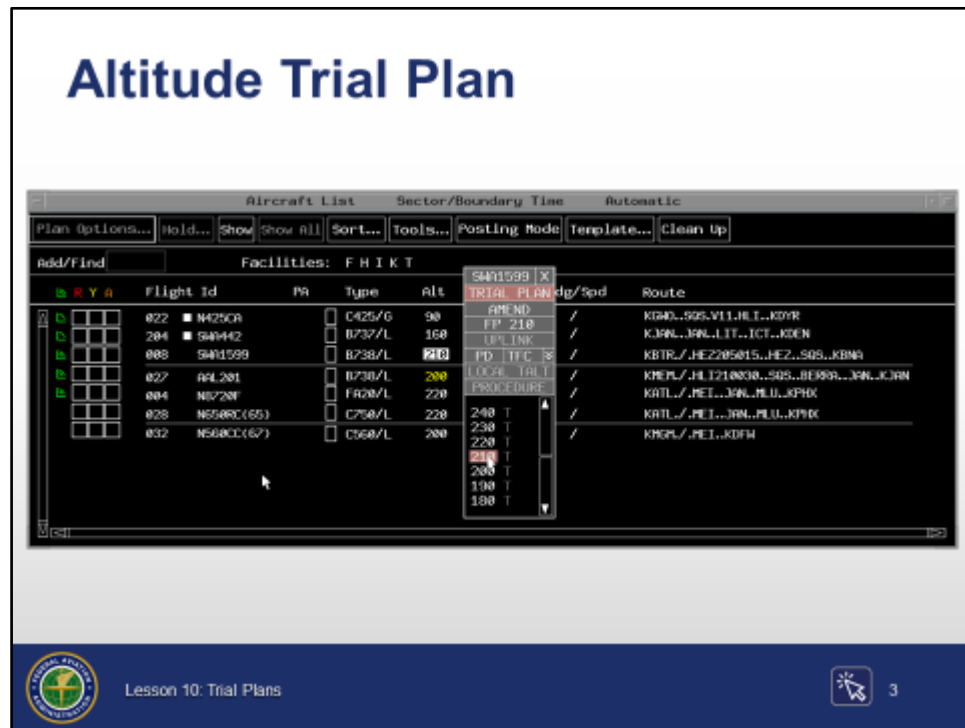


# CREATION OF TRIAL PLANS (CONT'D)

## Altitude Trial Plan

TI 6110.101,  
sec. 3.1.3.7.2

ERAM ATCHI  
MISC 230.05,  
pars. 3.7.3,  
3.8.22



Slide is animated, 5 clicks. Click where indicated by click icons.

- ⦿ The altitude menu provides a method for:
  - Creating a trial plan
  - Amending a flight plan assigned altitude
  - Entering an interim altitude
  - Entering a procedure altitude
- ⦿ The altitude menu is accessed by:
  - Selecting the altitude field in the Aircraft List (ACL), or
  - The Plan Options Menu

*Continued on next page*

# CREATION OF TRIAL PLANS (CONT'D)

---

## Altitude Trial Plan (Cont'd)

ERAM ATCHI  
MISC 230.05,  
pars. 3.7.3,  
3.8.22

- ⦿ Creating a trial plan via the ACL altitude field:



*Click to highlight altitude field and open altitude menu.*

- TBP or TBE the altitude field
  - Altitude menu is displayed
    - Aircraft ID displayed below the menu header
    - Trial Plan button is selected by default



*Click to select FL190 and create trial plan.*

- TBP or TBE a value from the menu
  - Altitude menu is removed from display
- Trial plan is created to reflect a new altitude
- Trial plan is displayed on the Plans Display
  - Plans Display will appear on top of all other views



*Click to close Plans Display.*

- ⦿ Creating a trial plan via the Plan Options Menu



*Explain how the Plan Options Menu may be used in lieu of selecting the altitude, speed, or route fields.*



*Click to highlight SWA1599 call sign.*

- TBP the call sign



*Click to open Plan Options Menu.*

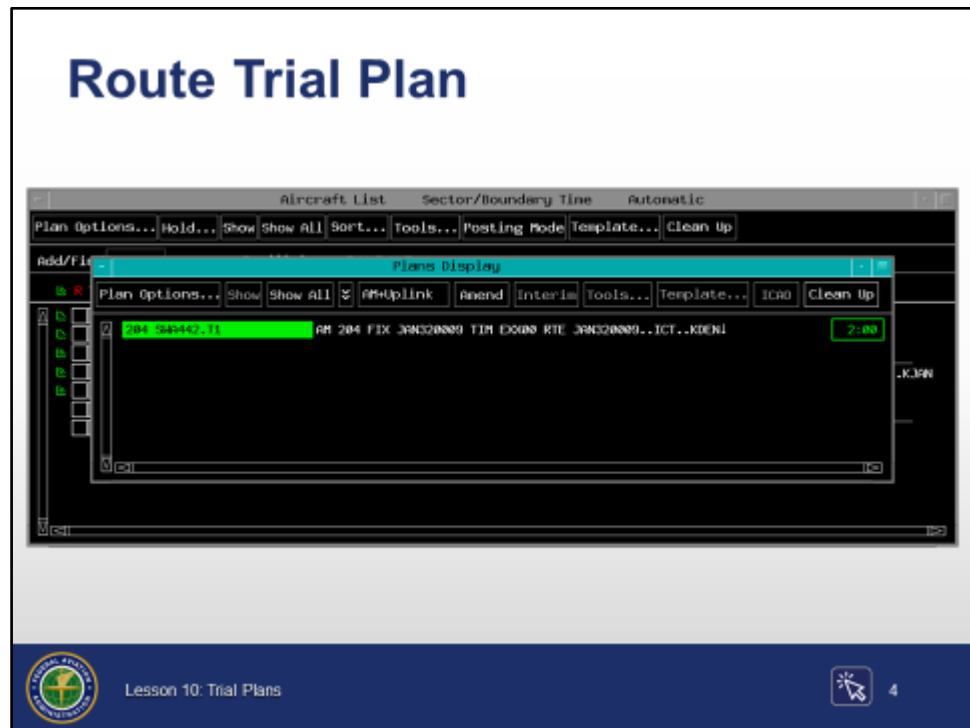
- TBP Plan Options... button
  - Choose:
    - Altitude...
    - Speed...
    - Route...
    - Trial Restrictions...

# CREATION OF TRIAL PLANS (CONT'D)

## Route Trial Plan

TI 6110.101,  
secs. 3.1.3.7.3,  
10.2.2

ERAM ATCHI  
MISC 230.05,  
table 3-117



Slide is animated, 4 clicks. Click where indicated by click icons.

- Create a route trial plan



Click to dwell on route.



Click to select route field and open Route Menu.

- TBP the route field from the ACL
  - Route Menu is displayed
    - Aircraft ID and type displayed below the menu header
    - Trial Plan button is selected by default

*Continued on next page*

# CREATION OF TRIAL PLANS (CONT'D)

---

## Route Trial Plan (Cont'd)

TI 6110.101,  
sec. 10.2.2

ERAM ATCHI  
MISC 230.05,  
table 3-117



*Click to highlight ICT in "Direct-to-Fix".*



*Click to TBP.*

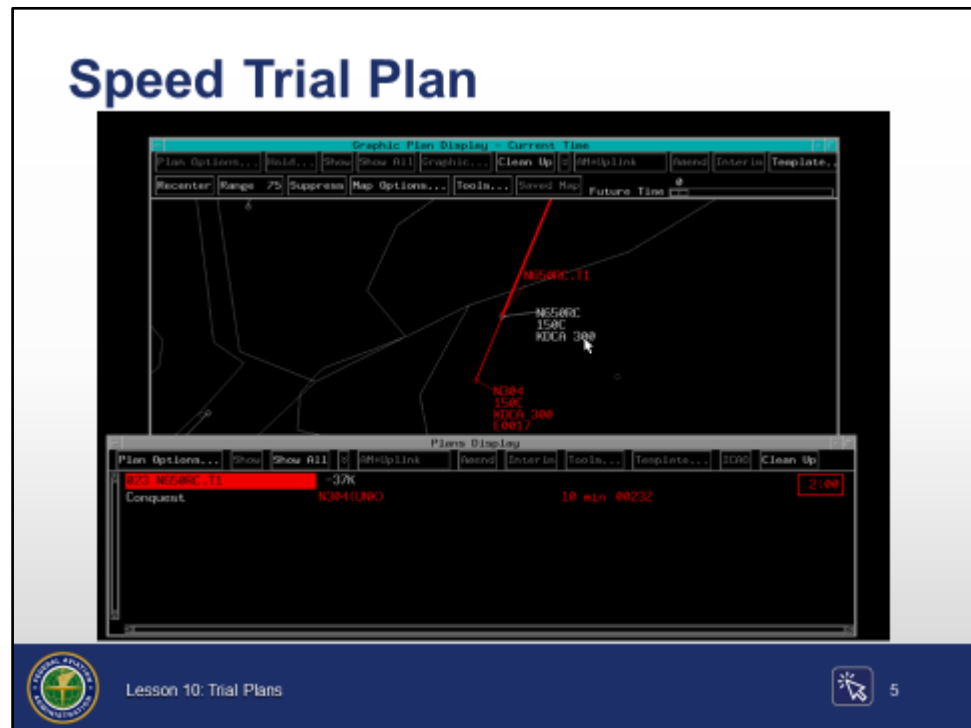
- Enter route information
    - TBP a direct-to-fix, or
    - Select an ATC preferred route, or
    - Manually type in a new route
      - KBE
  - The Route Menu is removed from display
  - Trial plan is created to reflect the new route
  - Trial plan is displayed on the Plans Display
    - Plans Display will appear on top of all other views
-

# CREATION OF TRIAL PLANS (CONT'D)

## Speed Trial Plan

TI 6110.101,  
sec. 3.1.3.7.4

ERAM ATCHI  
MISC 230.05,  
table 3-114, par.  
3.7.31



Slide is animated, 4 clicks. Click where indicated by click icons.

⦿ There are two methods to create speed trial plans:

- Graphic Plan Display (GPD)
- Plans Options Menu

⦿ From the GPD



Click to move cursor to speed field in GPD data block.



Click to TBP speed in GPD data block.

- TBP the speed field in the GPD data block
  - Speed is highlighted in reverse video
  - Speed Menu is displayed
    - Aircraft ID displayed below the menu header

*Continued on next page*

# CREATION OF TRIAL PLANS (CONT'D)

---

## Speed Trial Plan (Cont'd)

TI 6110.101,  
sec. 3.1.3.7.4

ERAM ATCHI  
MISC 230.05,  
table 3-114, par.  
3.7.31



*Click to move cursor to -37.*



*Click to TBP -37.*

- Enter speed information
  - TBP a speed value from the menu, or
  - Type the desired speed in the input field
    - KBE
- The Speed Menu is removed from display
- A trial plan is created to reflect the new speed
- Results of the trial plan are displayed on the Plans Display
  - Plans Display will appear on top of all other views



*Explain how the selected speed reduction causes an alert with traffic behind, shown on GPD and Plans Display.*

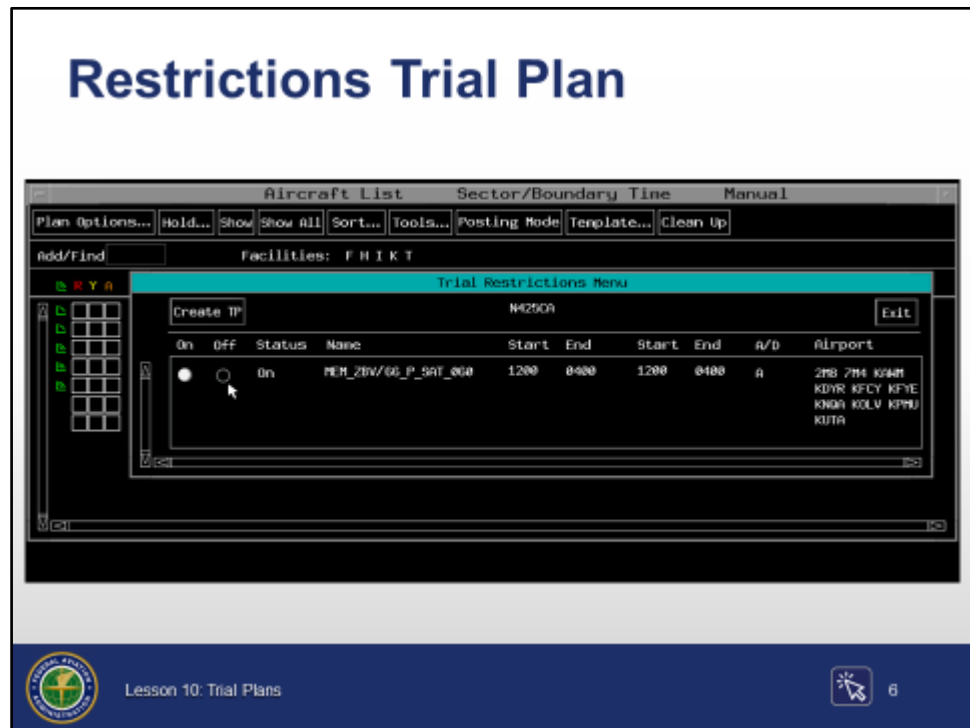
- ⦿ Trial Plan for speed from the Plan Options Menu
    - TBP Flight ID
      - Flight ID is highlighted in reverse video
      - Plan Options... is active
    - TBP Plan Options Menu bar button
      - Plan Options Menu is displayed
      - Aircraft ID displayed below the menu header
    - Enter speed information
      - TBP a speed value from the menu, or
      - Type the desired speed in the input field
        - KBE
      - The Speed Menu is removed from display
    - Trial plan is created to reflect a new speed
    - Trial plan is displayed on the Plans Display
      - Plans Display will appear on top of all other views
-

# CREATION OF TRIAL PLANS (CONT'D)

## Restrictions Trial Plan

TI 6110.101,  
sec. 3.2.3.10

ERAM ATCHI  
MISC 230.05,  
Table 3-118



*Slide is animated, 5 clicks. Click where indicated by click icons.*

- ⦿ Create a trial plan for restrictions



*Click to highlight flight ID and move cursor to active Plan Options.*

- TBP flight ID in ACL
  - Flight ID is highlighted in reverse video
  - Plan Options... becomes active



*Click to open Plan Options Menu.*

- TBP Plan Options... in menu bar
  - Plan Options Menu is displayed
    - Aircraft ID displayed below the menu header

*Continued on next page*

# CREATION OF TRIAL PLANS (CONT'D)

---

## Restrictions Trial Plan (Cont'd)

TI 6110.101,  
sec. 3.2.3.10

ERAM ATCHI  
MISC 230.05,  
Table 3-118



*Click to select Trial Restrictions on Plan Options Menu.*

- TBP Trial Restrictions in the Plan Options Menu
  - Plan Options Menu is removed
  - Trial Restrictions Menu is displayed
    - All restrictions in the facility that impact the selected aircraft route of flight are displayed



*Click to set restriction to Off.*

- TBP On or Off radio buttons in the Trial Restrictions Menu to apply or suspend restriction(s)



*Click to create trial plan.*

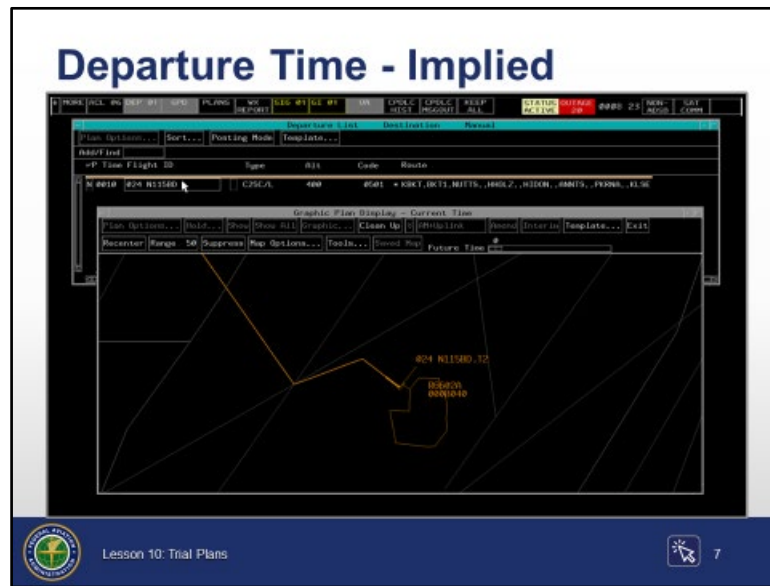
- TBP the Create TP button
  - Trial Restrictions Menu is removed
- Trial plan is created to reflect the restriction selection
- Trial plan is displayed on the Plans Display
  - Plans Display will appear on top of all other views



# CREATION OF TRIAL PLANS (CONT'D)

## Departure Time - Implied

ERAM ATCHI  
MISC 230.05,  
par. 7.8.27



*Slide is animated, 3 clicks. Click where indicated by click icons.*

- ⦿ There are three methods to create trial departure plans in the Departure List (DL)
  - Current time
  - Proposed time
  - Other specified time



*Click to move cursor to dwell on flight ID.*

- ⦿ Departure trial plan with current time:



*Click to create trial plan at current time.*

- TBE flight ID
  - Trial plan is created using current time
  - Trial plan is displayed on the GPD
  - Trial plan may also be viewed in the Plans Display:
    - TBP or TBE on the PLANS button in the ACL toolbar

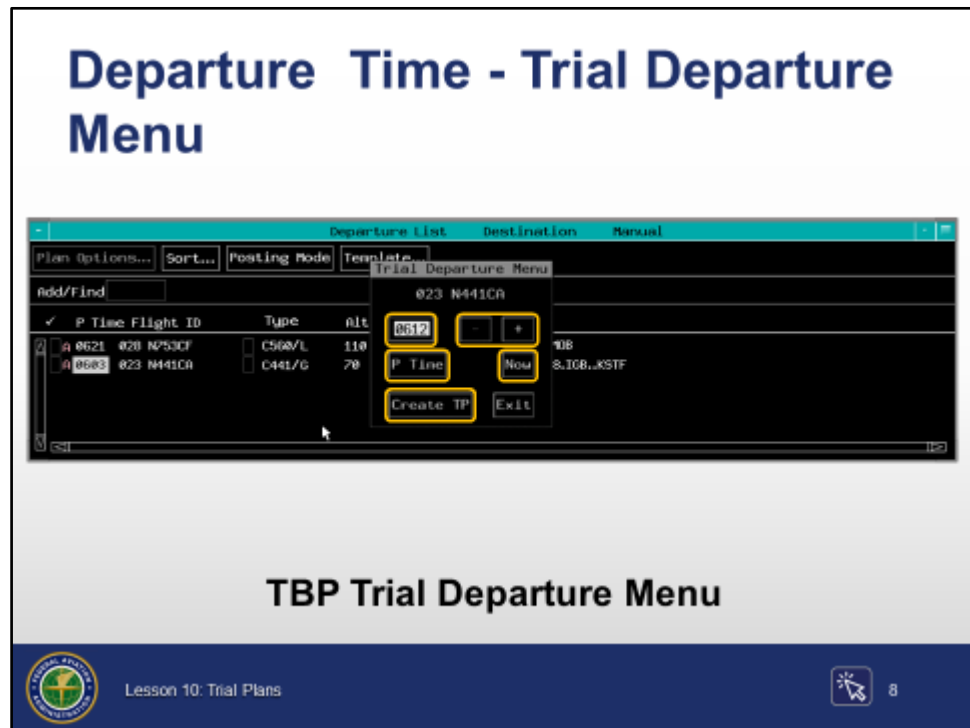


*Click to move cursor to and select the PLANS button.*

# CREATION OF TRIAL PLANS (CONT'D)

## Departure Time, Trial Departure Menu

ERAM ATCHI  
MISC 230.05,  
par. 7.8.27



Slide is animated, 8 clicks. Click where indicated by click icons.



Click to dwell on N441CA P time.

- ⦿ Create a departure trial plan with proposed time or other time



Click to open Trial Departure Menu.

- TBP the time in the P Time column
  - Time is highlighted in reverse video
    - Cannot be in the past
    - In this example current time is 9 minutes after P time
  - The Trial Departure Menu is displayed
    - Aircraft ID and CID displayed at the top of the menu
    - Time entry field is populated with current time highlighted in reverse video

*Continued on next page*

# CREATION OF TRIAL PLANS (CONT'D)

---

## Departure Time, Trial Departure Menu (Cont'd)

ERAM ATCHI  
MISC 230.05,  
par. 7.8.27



*Click to highlight Create TP.*

- TBP Create TP button or KBE
  - Trial plan is created using time in the Trial Departure Menu
  - Trial plan is displayed on the Plans Display and GPD
    - GPD will appear behind Plans Display
- Departure trial plan with other specified time
  - TBP the time in the P Time column
    - Time displayed is highlighted in reverse video
    - The Trial Departure Menu is displayed
      - Aircraft ID and CID displayed at the top of the menu
      - Time entry field is populated with current time highlighted in reverse video



*Click to highlight user entry time field.*

- Type the desired time in the entry field, or



*Click to highlight “-” and “+”.*

- TBP minus “-” or plus “+” buttons to add or subtract time (in one minute increments) from the displayed time, or



*Click to highlight P time.*

- TBP the P Time button, or
  - If the filed P time is in the past, this button is grayed out



*Click to highlight Now.*

- TBP the Now button



*Click to highlight Create TP.*

- TBP Create TP button or KBE
    - Trial plan is created using proposed time
    - Trial plan is displayed on the Plans Display and GPD
      - GPD will appear behind Plans Display
-



# CREATION OF TRIAL PLANS (CONT'D)

## Knowledge Check

### Knowledge Check

How is a restriction trial plan created from the ACL?

- A. TBP Trial Restrictions...>Flight ID>Plan Options...
- B. TBP Flight ID>Plan Options...>Trial Restrictions
- C. TBP Plan Options...>Trial Restrictions>Flight ID

 Lesson 10: Trial Plans  9

**Question:** How is a restriction trial plan created from the ACL?



**Answer:** B. TBP Flight ID>Plan Options...>Trial Restrictions



# CREATION OF TRIAL PLANS (CONT'D)

## Knowledge Check

### Knowledge Check

How do you create a speed trial plan from the GPD?

- A. TBP the Speed menu button
- B. TBP the flight plan route
- C. TBP speed in the GPD data block

 Lesson 10: Trial Plans  10

**Question:** How do you create a speed trial plan from the GPD?



**Answer:** C. TBP speed in the GPD data block



# CREATION OF TRIAL PLANS (CONT'D)

## Knowledge Check

### Knowledge Check

What is the function of the “+” and “-” buttons on the Trial Departure Menu?

- A. Add or subtract time from the current time
- B. Move the flight entry up or down in the view
- C. Raise or lower the requested altitude

 Lesson 10: Trial Plans  11

**Question:** What is the function of the “+” and “-” buttons on the Trial Departure Menu?



**Answer:** A. Add or subtract time from the current time

# INVALID TRIAL PLAN

## Invalid Trial Plan

ERAM ATCHI  
MISC 230.05,  
pars. 2.1.3,  
11.6, 17.6



⊙ Invalid trial plans are coded in the Plans Display and GPD, as follows:

- Plans Display
  - Box drawn around entire entry with a dashed line in the same color as the trial plan ID
- GPD
  - Projected route of flight dashed line
  - Trial plan ID box drawn with a dashed line around trial plan ID in the same color as the trial plan

**Note:** A Trial Plan becomes invalid if a flight plan amendment is made after the trial plan for that flight was created.

# INVALID TRIAL PLAN (CONT'D)

## Resubmit Invalid Trial Plan

TI 6110.101,  
sec. 3.2.3.8

ERAM ATCHI  
MISC 230.05,  
par. 11.8.35

### Resubmit Invalid Trial Plan

Implied Command (TBE Trial Plan ID)

Lesson 10: Trial Plans 13



Slide is animated, 4 clicks. Click where indicated by click icon.

- ⦿ Resubmit an invalid trial plan via two methods on the GPD and Plans Display
  - Implied command (TBE)
  - Selected command (TBP)
- ⦿ Implied command, GPD



Click to TBE on invalid trial plan ID and resubmit.

- TBE trial plan ID of a plan that is coded invalid in the GPD
  - Resubmitted trial plan is displayed with a new trial plan number on the GPD and the Plans Display
  - The selected invalid trial plan is removed from the GPD and the Plans Display

Continued on next page



# INVALID TRIAL PLAN (CONT'D)

---

## Resubmitting an invalid Trial Plan (Cont'd)

TI 6110.101,  
sec. 3.2

ERAM ATCHI  
MISC 230.05,  
par. 11.8.35



*Click to begin the selected command (TBP) within the Plans Display.*

- ⦿ Selected command, Plans Display
  - TBP the trial plan ID on Plans Display
    - The trial plan ID is highlighted in reverse video
    - Menu bar buttons applicable to the selected entry are displayed as active



*Click to TBP the Plan Options button.*

- TBP Plan Options button
  - The Plan Options Menu is displayed and will have the trial plan ID displayed below the menu header



*Click to TBP Resubmit.*

- TBP Resubmit
  - The Plan Options Menu is removed from display
- Trial plan is created with a new trial plan ID on the GPD
- Trial plan is displayed with a new trial plan number on the Plans Display
  - Plans Display will appear on top of all other views

# INVALID TRIAL PLAN (CONT'D)

## Knowledge Check


### Knowledge Check

Which trial plan ID shows invalid trial plan coding?


A. **N650RC.T1**

B. **N650RC.T1**

C. **N650RC.T1**



Lesson 10: Trial Plans



14

**Question:** Which trial plan ID shows invalid trial plan coding?



**Answer:** C.

**N650RC.T1**



# INVALID TRIAL PLAN (CONT'D)

## Knowledge Check

### Knowledge Check

How do you resubmit an invalid trial plan?

- A. TBP Plan Options...>Resubmit>Trial Plan ID
- B. TBP Trial Plan ID>Plan Options...>Resubmit
- C. TBP Invalid List>Trial Plan ID>Resubmit

 Lesson 10: Trial Plans  15

**Question:** How do you resubmit an invalid trial plan?



**Answer:** B. TBP Plan ID>Plan Options...>Resubmit



# SENDING AN AMENDMENT OR INTERIM ALTITUDE (CONT'D)

---

## Amendment, Trial Plan - Plans Display (Cont'd)

TI 6110.101,  
sec. 3.2.1.2

ERAM ATCHI  
MISC 230.05,  
par. 17.8.21



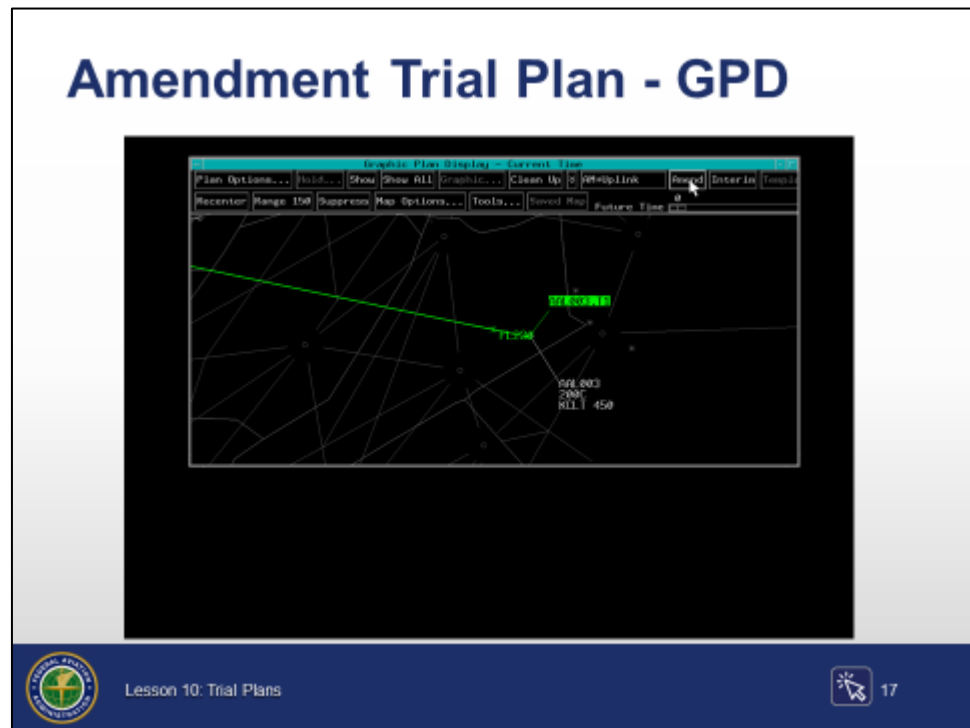
*Click to move cursor to Amend and TBP.*

- TBP Amend menu bar button
    - All trial plans for that aircraft ID are removed from the Plans Display
    - A new amendment plan will appear with .AM appended to it
  - TBP AM+Uplink menu bar button
    - This command is similar to TBP Amend, but it will also send the CPDLC command to the aircraft
- ⦿ If the system is unable to generate valid amendment text, the Amend button is grayed out
  - ⦿ If the FRC check box was selected in a Route Menu when a route trial plan was created, it is ignored when the user enters the amend command
-

# SENDING AN AMENDMENT OR INTERIM ALTITUDE (CONT'D)

## Amendment Trial Plan - GPD

ERAM ATCHI  
MISC 230.05,  
par. 11.8.40



*Slide is animated, 2 clicks. Click where indicated by click icons.*

- ⦿ Trial plan on the GPD may be sent as an amendment



*Click to TBP the trial plan ID.*

- TBP the trial plan ID in the trial data block
  - Trial plan ID is highlighted in reverse video
  - Menu buttons applicable to the selected entry are displayed as active



*Click to move cursor to amend button and TBP.*

- TBP Amend menu bar button
  - The trial plan route is removed from the GPD
  - All trial plans for that aircraft are removed from the Plans Display
  - In the Plans Display, a new amendment plan will appear with .AM appended to it

*Continued on next page*

# SENDING AN AMENDMENT OR INTERIM ALTITUDE (CONT'D)

## **Amendment Trial Plan - GPD (Cont'd)**

ERAM ATCHI  
MISC 230.05,  
par. 11.8.40

- 
- TBP AM+Uplink menu bar button
    - This command is similar to TBP amend, but it will also send the CPDLC command to the aircraft
-


# SENDING AN AMENDMENT OR INTERIM ALTITUDE (CONT'D)

## Knowledge Check


### Knowledge Check

Selecting AM+Uplink amends the FP and \_\_\_\_.

- A. sends a CPDLC command to the aircraft
- B. amends the CPDLC command
- C. creates a trial plan



Lesson 10: Trial Plans



18

**Question:** Selecting AM+Uplink amends the FP and \_\_\_\_.



**Answer:** A. sends a CPDLC command to the aircraft





# SENDING AN AMENDMENT OR INTERIM ALTITUDE (CONT'D)

## Knowledge Check

### Knowledge Check

How is a trial plan sent as an amendment?

- A. TBP Trial Plan ID>Plan Options...>Amend
- B. TBP Amend>Trial Plan ID
- C. TBP Trial Plan ID>Amend

 Lesson 10: Trial Plans  19

**Question:** How is a trial plan sent as an amendment?



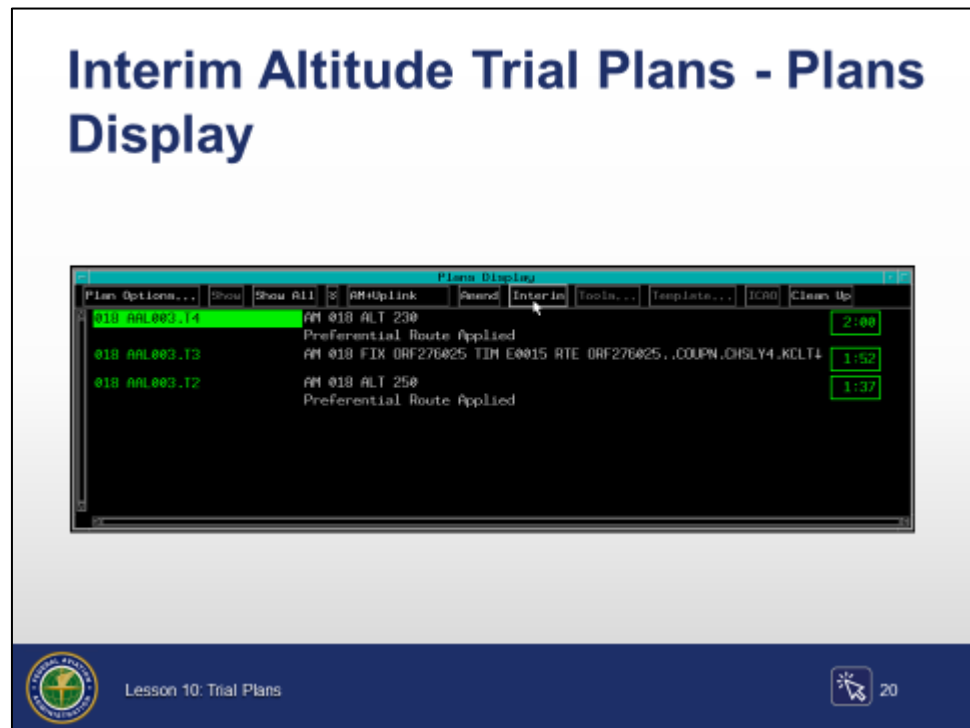
**Answer:** C. TBP Trial Plan ID>Amend

# SENDING AN AMENDMENT OR INTERIM ALTITUDE (CONT'D)

## Interim Altitude Trial Plan - Plans Display

TI 6110.101,  
sec. 3.2

ERAM ATCHI  
MISC 230.05,  
par. 17.8.23



Slide is animated, 2 clicks. Click where indicated by click icons.

- Interim altitude trial plans may be entered into the system as an amendment



Click to move cursor to plan ID and TBP.

- TBP a trial plan ID
  - The trial plan ID is highlighted in reverse video
  - Menu bar buttons applicable to the selected entry are displayed as active



Click to move cursor to Interim and TBP.

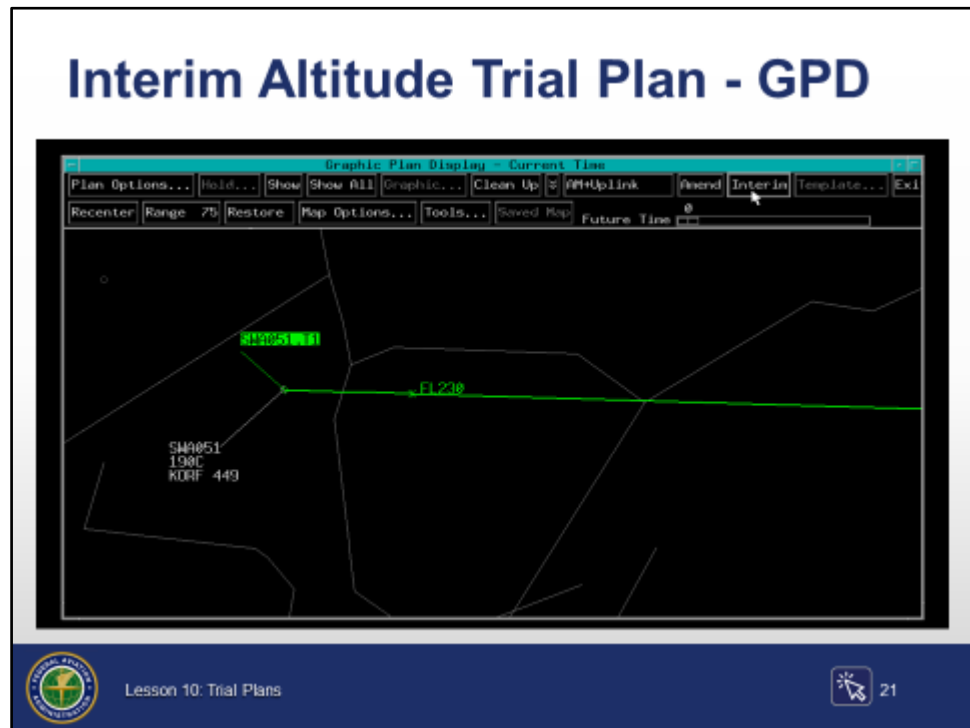
- TBP Interim menu bar button
  - All trial plans for that aircraft ID are removed from the Plans Display
  - A new amendment plan will appear with .AM appended to it

# SENDING AN AMENDMENT OR INTERIM ALTITUDE (CONT'D)

## Interim Altitude Trial Plan - GPD

TI 6110.101,  
sec. 3.2

ERAM ATCHI  
MISC 230.05,  
par. 11.8.41



*Slide is animated, 2 clicks. Click where indicated by click icons.*



*Click to TBP the Plan ID.*

- ⦿ TBP the trial plan ID in the trial plan data block
  - The trial plan ID is highlighted in reverse video
  - Menu bar buttons applicable to the selected entry are displayed as active



*Click to move cursor to Interim and TBP.*

- ⦿ TBP Interim menu bar button
  - The trial plan route is removed from the GPD
  - All trial plans for that aircraft are removed from the Plans Display
  - A new amendment plan will appear with .AM appended to it



# SENDING AN AMENDMENT OR INTERIM ALTITUDE (CONT'D)

## Knowledge Check

### Knowledge Check

How do you enter an interim altitude from a trial plan?

- A. TBP Interim>Plan ID
- B. TBP Trial Plan ID>Interim
- C. TBP Trial Plan ID>T>Send

Lesson 10: Trial Plans 22

**Question:** How do you enter an interim altitude from a trial plan?



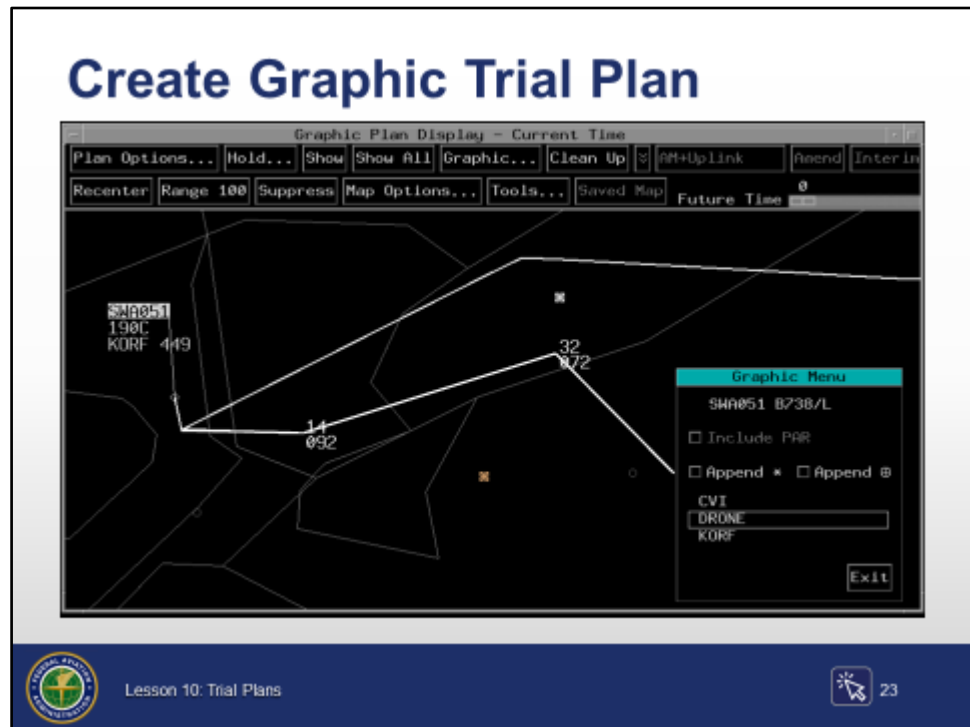
**Answer:** B. TBP Trial Plan ID>Interim

# GRAPHIC TRIAL PLAN

## Create Graphic Trial Plan

TI 6110.101,  
sec. 3.1.2.2

ERAM ATCHI  
MISC 230.05,  
par. 11.8.29



*Slide is animated, 4 clicks. Click where indicated by click icons.*



*Click to TBH destination field.*

- ⦿ TBH destination field of the GPD data block
  - Route of the selected aircraft is shown and coded to indicate graphic entry mode
    - Cursor shape becomes a plus symbol
    - Graphic Menu is displayed



*Click to TBP first point south of current route.*



*Click again for second point.*

- ⦿ Construct the new route by TBP(s) to select the new points
  - The displayed route line is anchored at each selected location and the continuation of the route line follows the trackball location
    - Each selected location displays number of miles from the position symbol above the bearing from the position symbol

*Continued on next page*

# GRAPHIC TRIAL PLAN (CONT'D)

---

## Create Graphic Route Trial Plan (Cont'd)

TI 6110.101,  
sec. 3.1.2.2

ERAM ATCHI  
MISC 230.05,  
par. 11.8.29

- ⦿ To delete a segment
  - TBH to delete the last selected point
    - The displayed route line is anchored at the previously selected location
    - Continuation of the route line follows the trackball location



*Click to TBP DRONE on Graphic Menu.*

- ⦿ Select rejoin fix
    - After designating graphic route point(s), TBP a fix from the Graphic Menu to rejoin the original route
    - The graphic trial plan is displayed on the GPD
-



# GRAPHIC TRIAL PLAN (CONT'D)

## Knowledge Check

### Knowledge Check

What is the first step to create a graphic trial plan on the GPD?

- A. TBH the destination in the GPD data block
- B. TBP Graphic from the menu
- C. TBE flight ID

 Lesson 10: Trial Plans  24

**Question:** What is the first step to create a graphic trial plan on the GPD?



**Answer:** A. TBH the destination in the GPD data block



# GRAPHIC TRIAL PLAN (CONT'D)

## Knowledge Check

### Knowledge Check

Only one point can be designated when creating a graphic trial plan.

- A. True
- B. False

 Lesson 10: Trial Plans  25

**Question:** Only one point can be designated when creating a graphic trial plan.



**Answer:** B. False




# PART-TASK EXERCISE: TRIAL PLANS

---

## Part-Task Exercise

- **Purpose**
  - Perform the following tasks:
    - Creating a trial plan
    - Resubmitting an invalid trial plan
    - Sending an amendment or interim altitude
    - Graphic trial planning
- **Materials**
  - TTL part-task exercise: Trial Plans
- **Directions**
  - This exercise takes approximately 30 minutes to complete. Each student must complete the checklist. No headsets are required.

 Lesson 10: Trial Plans 26

---

## Purpose

Perform the following tasks:

- ⦿ Creating a trial plan
  - ⦿ Resubmitting an invalid trial plan
  - ⦿ Sending an amendment or interim altitude
  - ⦿ Graphic trial planning
- 

## Materials



Handout: *HO01\_L10*

- ⦿ TTL part-task exercise: Trial Plans



TTL Scenario: *55054003\_L10\_S##*

---

## Directions

This exercise takes approximately 30 minutes to complete. Each student must complete the checklist. No headsets are required.



*Provide instruction as required. Check off each task after completion. No ghost pilots are required.*

---


# CONCLUSION

## Lesson Summary

### Lesson Summary

**This lesson covered:**

- Creating a trial plan
- Resubmitting an invalid trial plan
- Sending an amendment or interim altitude
- Graphic trial planning



Lesson 10: Trial Plans

27



*Review and elaborate briefly on the following topics. Ask students if they have questions about any of the concepts covered in the lesson.*

- ⦿ This lesson covered
  - Creating a trial plan
    - Altitude
    - Route
    - Speed
    - Restrictions
    - Departure time, implied
    - Departure time, Trial Departure Menu
  - Resubmitting an invalid trial plan
  - Sending an amendment or interim altitude
    - Amendment, trial plan ID, Plans Display
    - Amendment, trial plan ID, GPD

*Continued on next page*

# CONCLUSION (CONT'D)

---

## Lesson Summary (Cont'd)

- Interim altitude, trial plan ID, Plans Display
- Interim altitude, trial plan ID, GPD
- Graphic trial planning
  - Create graphic route trial plan



*Hand out and administer the End-of-Lesson Test. Provide feedback on missed items, including why particular answers are correct, as well as why some responses are incorrect.*

---